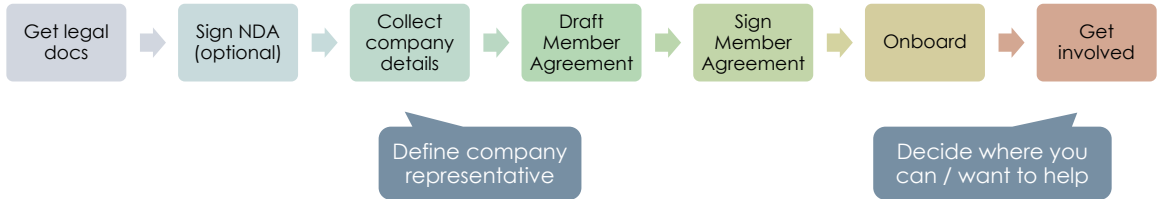




# Becoming a member

How to join

# ○ Process to become a member



# ○ Member benefits



## For all members

- Demonstrate security leadership
- Vote in elections, get elected
- Join committees / working groups
- Drive alignment and standards
- Leverage joint open-source efforts
- Early access to CHERI code
- Network and exchange
  - Member-only address book
  - Member-only content, reports, info
- Accelerate adoption of CHERI
- Benefit from CHERI marketing
- Free visibility on CHERI Alliance Website
  - Member page
  - Blog
- Free visibility at events \*
  - Speaking slots, webinars
  - Booth, demo
- Show product compliance \*\*

## ○ Immediate benefits

### ◆ Visibility

- ◆ Dedicated page on Website
  - Company presentation
  - Products presentation
- ◆ Publish on the Alliance channels

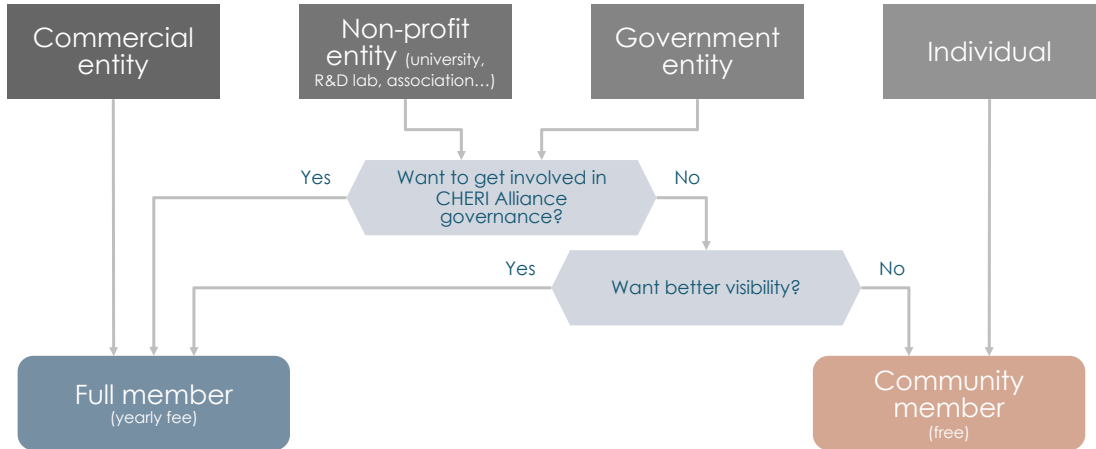
### ◆ Access member-only content

- ◆ Intranet with info, news, ...
- ◆ Working groups info
- ◆ Network, communicate, ...



**CHERI**  
Alliance member

# ○ How to decide membership type?



# Membership tiers

	Full Member (mandatory for commercial companies, possible for other entities)	Community (accessible only to non-profit – universities / research / govt / associations / individuals / ...)
Gov board participation	● [7 member seats]	● [0-2 community seats]
Vote to elect gov board	■ [for member seats]	■ [for community seats]
Committees' participation	●	○
Working groups participation	■	■
Full members benefits (directory, visibility, product listing...)	■	
Cost	Depends on organization size	Free



- Yes
- Yes, if elected
- By invitation only

## ○ Membership discounts

Pay now for a multi-year membership and get a better deal!

1 year



Full membership  
fee

2 years



**10% discount** on  
the first year



Protect against  
future increases

3 years



**30% discount** on  
the first year



Protect against  
future increases



Show support of  
CHERI

5 years



**100% discount**  
on the first year



Protect against  
future increases



Demonstrate full  
commitment to  
CHERI

## ○ Sponsorship discounts

Sponsor a new member and get a discount!

- Only applicable to full members
- Get 10% discount per referred company signing for a full membership
  - Applies to your next 1-year membership payment \*
  - Maximum 100% discount for 10 sponsored companies
- Sponsored company also gets 10% discount
  - Applies to their first 1-year membership payment \*
  - Can only be sponsored by one member

Up to **100%**  
discount!

## ○ Getting involved

- Governing board
  - Decide of the direction of the CHERI Alliance
  - Manage committees
- Committees
  - Decide concrete actions for committee's scope
  - Manage working groups
- Working groups
  - Focus on individual projects
  - Contribute ideas, resources
- CHERI Alliance conferences (twice a year)
  - Attend (free)
  - Propose talks or posters
  - Exhibit (free for members)

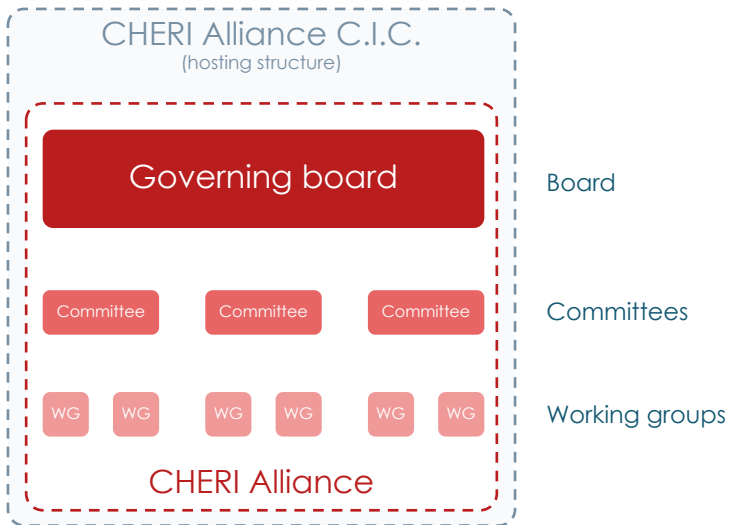
### No **mandatory** commitment

- Decide how you get involved
- Focus on your interests
- Become more visible by participating more

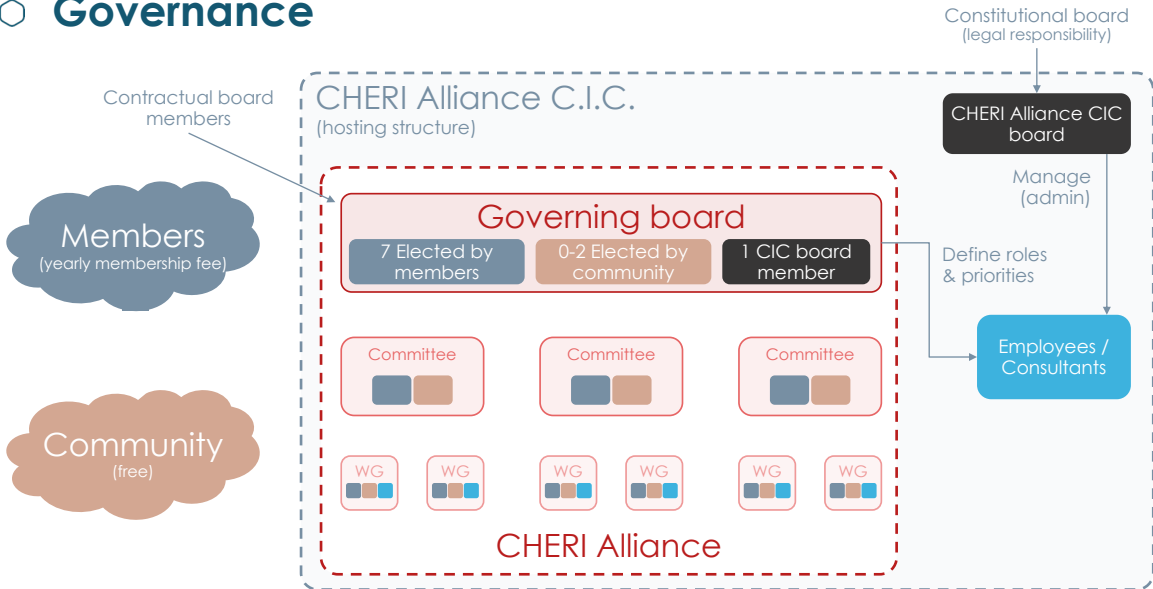
# ○ Governance

Members  
(yearly membership fee)

Community  
(free)



# Governance



## Legal documents

Document	Notes
Articles of Association	Incorporation document of the CHERI Alliance Community Interest Company Legal structure, responsibility and functioning of the company's Board of Directors
Governance Framework	Defines how the CHERI Alliance works, and its structure
Terms of Reference	Composition, roles and responsibilities of the governing structure (Governing Board and Committees)
Member Agreement	Benefits, responsibilities and details of membership
Policies	Focus on particular topics: IP, Trademark, Code of conduct, Conflict of interest, Anti-trust

## ○ Policies

- Complement legal documents to add details on focused topics
  - <https://cheri-alliance.org/legal-and-policies/>

Policy	Philosophy
<b>IP</b>	When possible, open-source with ownership by the CHERI Alliance If not, member bringing the IP keeps ownership and gives a license to other members CHERI specs and software adapted to CHERI are out of scope for the Alliance
<b>Trademark</b>	Community members can use community trademark (e.g. for research...) Members can use member-only trademark in communication Products need to be certified to bear product-only trademark
<b>Code of conduct</b>	Inclusivity, openness, honesty Includes compliance with the law: anti-bribery, export control, sanctions
<b>Conflict of interest</b>	Focus on benefit to the community, enable competitors to collaborate
<b>Anti-trust</b>	Statement of competition compliance

TBD

# As open as possible

Exceptions can happen depending on the case (try to avoid GPL...)

Type of IP	Licensor	Owner	Preferred / default license	Reasoning
<b>Marketing docs</b> (website, slides, articles, blogs, user stories, PR, ...)	Alliance	Alliance	CC BY-SA 4.0 Creative Commons Attribution-ShareAlike 4.0 International	The "voice" of CHERI Alliance, should be consistent and unmodified
<b>Training / Tutorials</b>	Alliance	Alliance	CC BY-SA 4.0 Creative Commons Attribution-ShareAlike 4.0 International	Content needs to be adapted to different audiences
<b>Ambassadors' material</b>	Alliance	Alliance	CC BY-SA 4.0 Creative Commons Attribution-ShareAlike 4.0 International	Content needs to be adapted to different audiences
<b>Forums</b>	Alliance	Alliance	CC BY-SA 4.0 Creative Commons Attribution-ShareAlike 4.0 International	Need user-generated content to be authentic
<b>Technical recommendations</b>	Alliance	Alliance	CC BY-SA 4.0 Creative Commons Attribution-ShareAlike 4.0 International	Official technical position of the CHERI Alliance
<b>Compliance suites</b>	Alliance	Contributor	Apache-2.0 (including std contribution)	Enable easy contribution and improvements
<b>CHERI software demos / examples</b>	Alliance	Contributor	Apache-2.0 (including std contribution)	Enable easy contribution and improvements
<b>Contributions to / modifications of external projects</b>			Keep existing license, adapt to case	Be flexible and pragmatic
<b>Internal documents</b>	Alliance	Alliance	NDA with members	Keep confidential
<b>Member info</b> (Name, Description, Logo, Quotes...)	Alliance	Member	CC BY-SA 4.0 Creative Commons Attribution-ShareAlike 4.0 International	Member's own information, need to be able to extract info
<b>Compliant product details</b>	Alliance	Member	CC BY-ND 4.0 Creative Commons Attribution-NoDerivatives 4.0 International	Member's own information, cannot be modified



# CHERI

---

# THANK YOU

Contact [contact@cheri-alliance.org](mailto:contact@cheri-alliance.org)

Web [www.cheri-alliance.org](http://www.cheri-alliance.org)